

# HIGH-PERFORMANCE NITROGEN GENERATOR ITKH-HP Series

## Compact & Energy Saving Design, Touch Panel Nitrogen Generator



### Improved performance with lower pressure air

The designed concept is using the better energy-saving compressor (0.69 MPa).

The gas volume is 20% more than the previous model.

(8% power consumption reduction, every 0.1 MPa down inlet air pressure)

0.80MPa → 0.69MPa

### Energy-saving operation "Flow operation mode"

Depends on the use volume of N<sub>2</sub> gas, the program reduce the volume of air consumption for energy saving.

Automatically controlling the adsorption-desorption cycle, the purity of the N<sub>2</sub> gas can be maintained via the touch panel.

### Low noise / Space saving design

The compact PSA units consist of aluminum pipes. Doesn't require any certification of pressure regulation.

Revised control system increase the volume, especially at the high purity range.

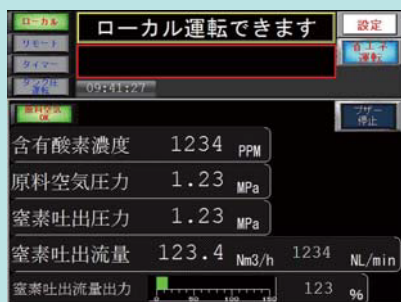
The generator can operate inside the office by lowering the noise to less than 60 dB(A).

### High durability / Long service life

Air operate valves are selected for all the unit control valves. PSA unit has long service life of 2 years (20,000 hours) with the filtration maintenance (oil & moisture).

## Easy control with high resolution (5 inch) touch panel

The display has high level of visibility by high luminance LED back light. It has a long service life of more than 60,000 hours. The touch panel allows us to verify the operation, set the operation mode and manage the maintenance.



## Ethernet function

The Ethernet Interface (LAN) is built into the generator. By connecting to the internet, you can control the generator from distance by your PC or smartphone.



## Specification

Type	Purity %	Volume (Nm <sup>3</sup> /h) 0.69(0.83)MPa	Pressure (MPa) 0.69(0.83)MPa	Air Volume 0.69(0.83)MPa	Compressor kW	Dimension W x D x H (mm)	Weight kg	Noise Level dB(A)
ITKH5-11HP	99.999	1.1 (1.3)	0.55	165L/min (195L/min)	1.5	550 × 800 × 950	160	under 60
ITKH4-18HP	99.99	1.8 (2.1)	(0.7)					
ITKH3-24HP	99.9	2.4 (2.8)	0.5					
ITKH2-33HP	99	3.3 (3.9)	(0.65)					
ITKH5-16HP	99.999	1.6 (1.9)	0.55	240L/min (284L/min)	2.2	550 × 800 × 950	175	
ITKH4-27HP	99.99	2.7 (3.2)	(0.7)					
ITKH3-37HP	99.9	3.7 (4.4)	0.5					
ITKH2-52HP	99	5.2 (6.1)	(0.65)					
ITKH5-27HP	99.999	2.7 (3.2)	0.55	400L/min (472L/min)	3.7	550 × 800 × 1,250	200	
ITKH4-45HP	99.99	4.5 (5.3)	(0.7)					
ITKH3-62HP	99.9	6.2 (7.3)	0.5					
ITKH2-86HP	99	8.6 (10.1)	(0.65)					
ITKH5-37HP	99.999	3.7 (4.4)	0.55	570L/min (673L/min)	5.5	550 × 800 × 1,700	230	
ITKH4-63HP	99.99	6.3 (7.4)	(0.7)					
ITKH3-88HP	99.9	8.8 (10.4)	0.5					
ITKH2-127HP	99	12.7 (15.0)	(0.65)					

- \*1. The typical volume comes from material condition of ABM 35°CandRH 85%.
- \*2. N2 gas volume is changed by air condition. K factor= (0.1MPa + material air pressure) / (0.1 MPa + 0.69 MPa)
- \*3. If adding our standard caster (with adjuster feet), the generator becomes 65 mm higher.
- \*4. The listed noise level is the maximum value during the test operation under the general conditions
- \*5. For the improvement, forms and sizes are subject to alterate without notice.

Network: OSAKA TOKYO FUKUOKA AICHI SHANGHAI(CHINA) DAEJEON(KOREA) ARIZONA(USA) HO CHI MINH(VIETNAM)  
 TAIPEI(TAIWAN) KOWLOON(HONG KONG) BANGKOK(THAILAND) INDIA(KOTA)  
 Head Office: Minamishinmachi EXCEL Bldg. 2F 1-3-10 Minamishinmachi, Chuo-ku, Osaka, 540-0024 Japan  
 TEL : +81-6-6944-1313 FAX: +81-6-6944-1323  
 Tokyo Office: Tsukiyasu No.2 Bldg. 3F 5-32-10, Higashinipponi, Arakawa-ku, Tokyo, 116-0014 Japan  
 TEL : +81-3-5615-0234 FAX: +81-3-5615-0235  
 Web site: <http://www.ask-ibs.jp/> E-mail: [info@ask-ibs.jp](mailto:info@ask-ibs.jp)